

CENTRIC DIP

GDPDU FOR ENTERPRISEONE

The Principles for Data Access and Verifiability of Digital Documents by German law came into effect according to the statutory publication of the law dated 16th July 2001. Companies have to provide all tax-relevant documents and records in an automatically evaluable form if requested by the financial administration in the course of external audits. This law is valid for all companies based in the Federal Republic of Germany, irrespective of their size. The company management is responsible for providing the data. The law is valid for all external audits since 1st January 2002.

Centric DiP -
 Short implementation,
 full integration into your
 JD Edwards ERP

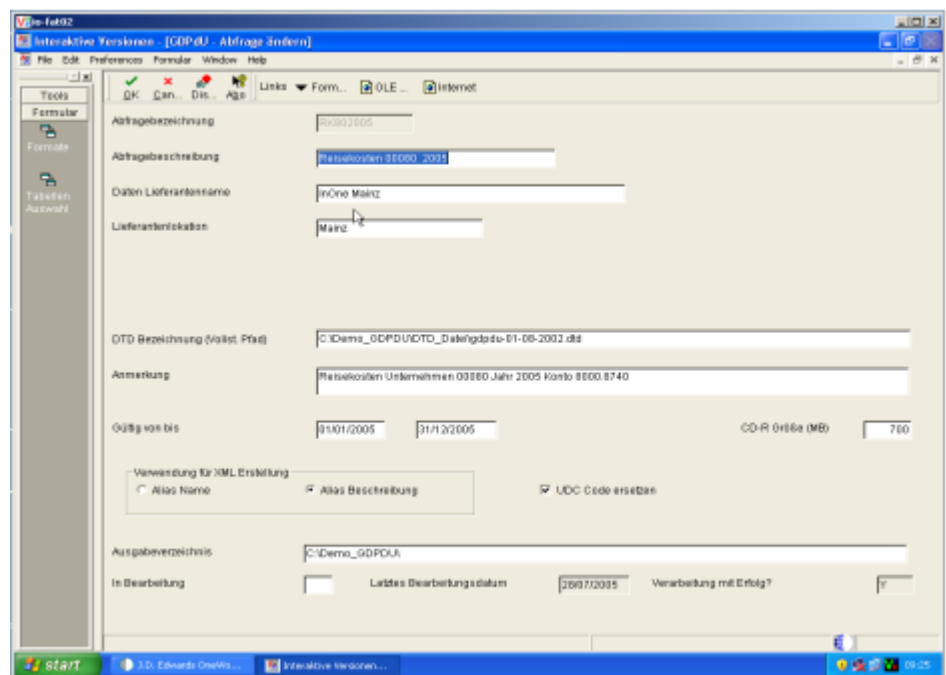
Centric DiP prepares you for these Principles

The solution is Centric DiP

- fully integrated into your JD Edwards ERP
- no change of navigation
- only seven steps to go
- immediate use

Centric DiP -
 Standard user interface:
 JD Edwards ERP

Centric DiP -
 Start immediately



Only seven steps to go

1. Add query

File as many queries as you wish to use.

2. Select output tables

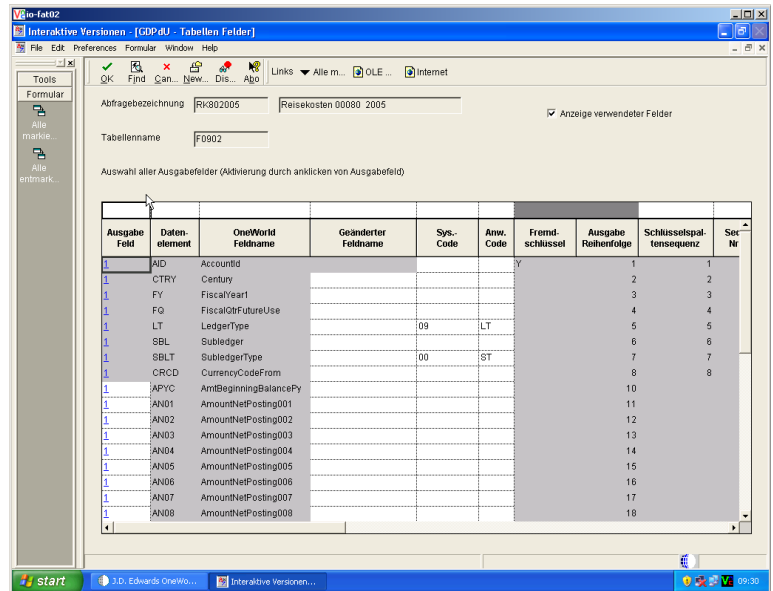
You may select all tables existing in JD Edwards EnterpriseOne.

3. Fix data selection

Additional data selections may be set up.

4. Select table elements

Click to select table elements.



5. Define table elements

This request is mandatory according to the Principles' standard. You may define the relations in a simple screen.

6. Carry out query

A successful query provides one directory per data carrier; it will be recorded on the corresponding media. With one click you may generate the XML description file.

7. Set up data carrier

To set up the data carrier (CD) you may use your company's existing CD program.

